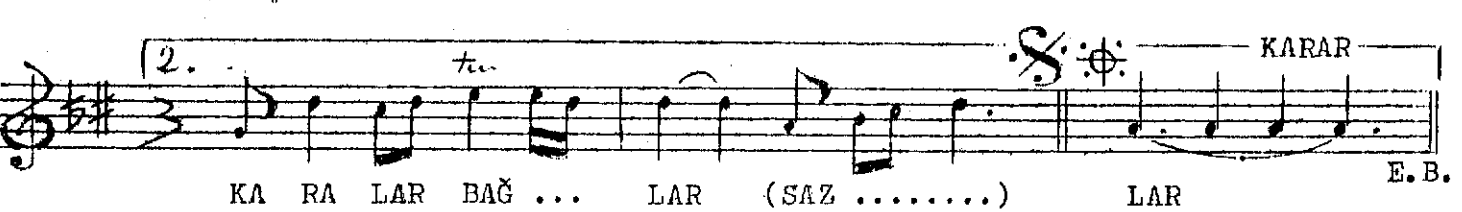
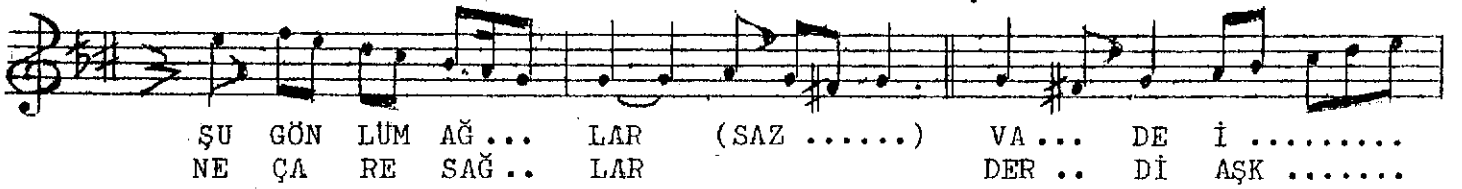
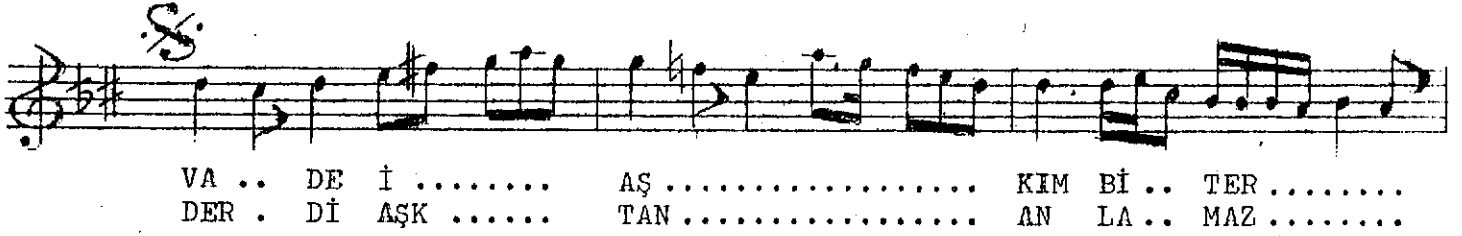
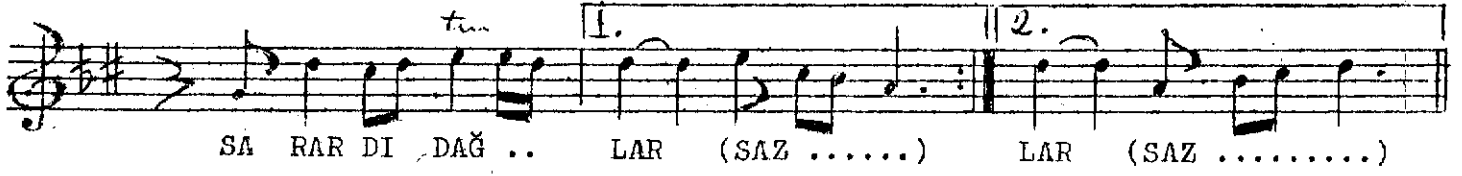


Usulü: CURCUNA

(Çehre-i hüznüm kadar sarardı dağlar)

AHMET UZEL

(♩-176)



ÇEHRE-İ HÜZNÜM KADAR SARARDI DAĞLAR
VÂDE-İ AŞKIM BİTER, ŞU GÖNLÜM AĞLAR
PERDE-İ ZULMETLE DİL KARALAR BAĞLAR
DERD-İ AŞKTAN ANLAMAZ NE ÇÂRE SAĞLAR