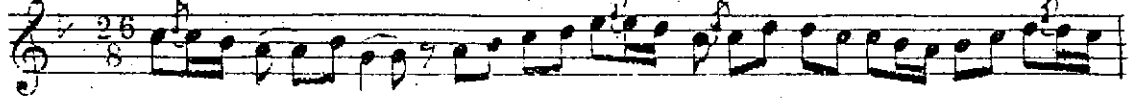


Saba makamında ve evsat üsulünde

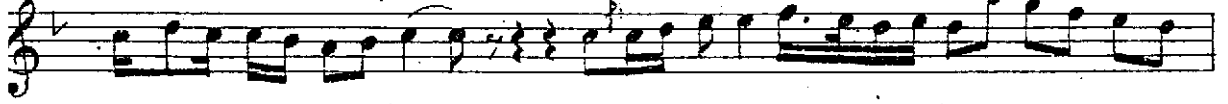
kâri natık

Zekâi Dede Efendi

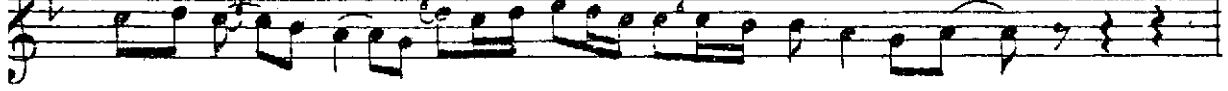
$\text{♩} = 126$ Pa — gi — ti ma ey — sa — ba — gey — su



yi — ya — ri pe — ri — şan ey.



le — me — ben dil fi — kâ ri



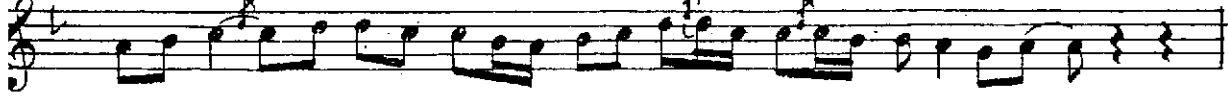
di — lim sad — pa — re it — me — şa



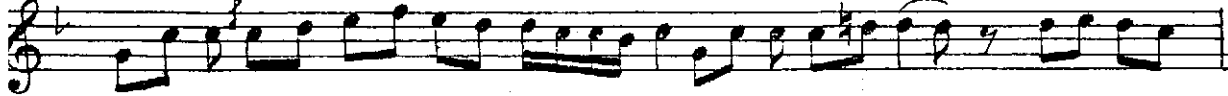
ne — a — sâ — du kun — ma — ka



kü — lü — ca — na — ne — ba — ri



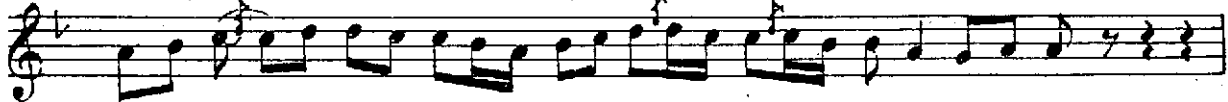
o — la — li — ça — ri — gâ — he — ra



gib ol — şoh hü sey — ni — ye



çi — kar di — iş — ti — hâ — ri



o — gül den — ay — ri lub git — di



hi — ca — ze gü nül uz — zal —

o — kur — cv — sa — fi — ya — ri

ke la — mi ra ha — tul — er — va —

hi — dir — heb o — şeh — naz — it —

se — de — it — men — fi — ra — ri

mü hay — yer — dir — i — şin — de — dil —

ru — ba — mız o — lur — hep — za —

ri zi — ruf — hen — de — hâ — ri —

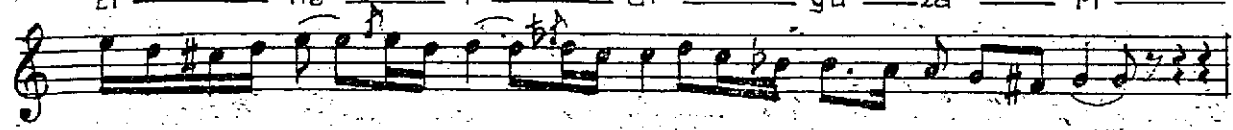
o — zül — fe — sün — bü — le — ben — zer —

di — nil — mez — ne — va — dir — ba —

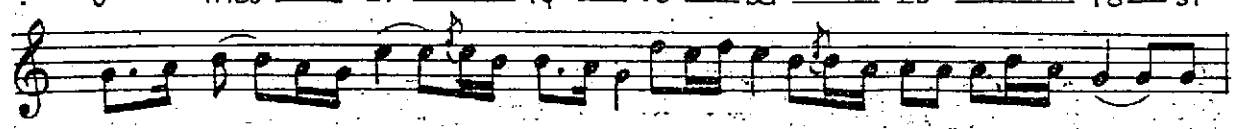
ne — bu — xi — müş — ki — ba — ri

be — nim — uş — şak — i — çin — de şim —
di — meş — hur be — ya — ti — it
mi — şem — a — hi — le — za — ri
o gul — bir — bu — se — lik — yer — gös
te rir — se — a şı — ran — za
ri der — goy — lüm — he — za — ri
su rer ru — me — a — cem — ol — bi
na — zi — ri çü — ger — da — ni
ye var — dir — iş — ti — hā — ri
be ni — mec — h — nun — i — düb — bir — kür
di — dir — ber — ni hā — vend — sem

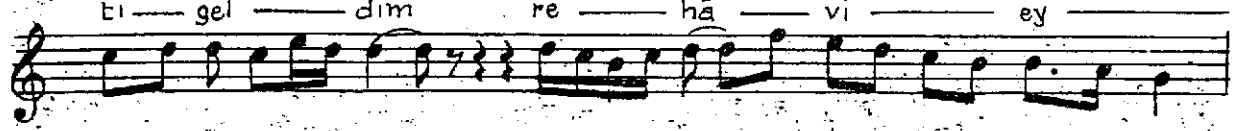
ti — ne — i — di — gü — za — ri —



o — mes — ti — iş — ve — ba — ze — ra — sı



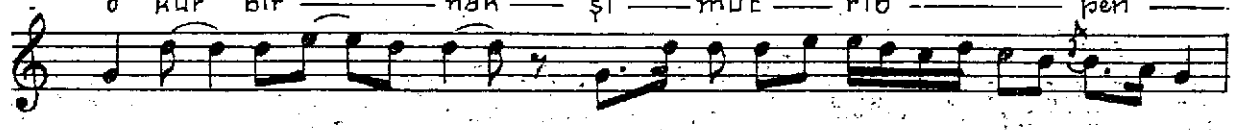
ti — gel — dim — re — hâ — vi — ey



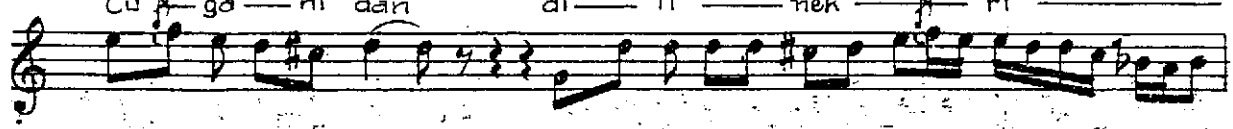
le miş — sa — ze — me — da — ri




o — kur — bir — nak — şı — mut — rib — pen



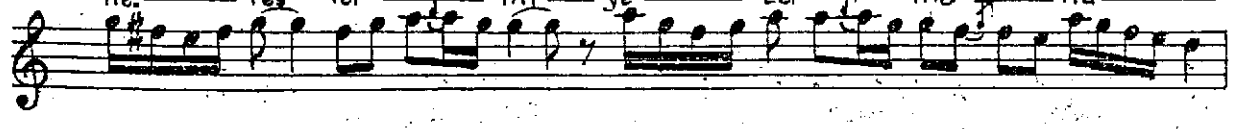
cü — gâ — hi — dan — di — li — nek — ri



ze — vir — me — in — ki — sa — ri



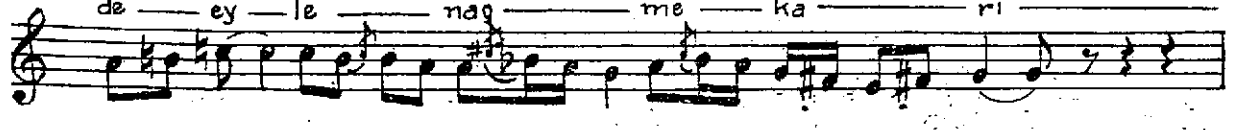
ne — fes — ler — mi — ye — ter — ma — hu



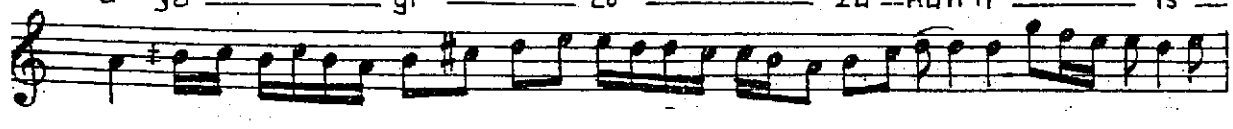
re — ey — dil — bu — şeb — za — vil



de — ey — le — nağ — me — kâ — ri



a — ya — gi — to — zu — küh — lı — is



fe — hân dir — bi — lur a — ni

ni şa — bu — rin — hi — ba — ri

a — rak — lâ — al — dağ — miş — dil — da

ri — ağ — yar — mü — ha — lif — ren

gi — le — al — miş — şî — kâ — ri

sa — kın — ol — ma — sa — kın — bes — te

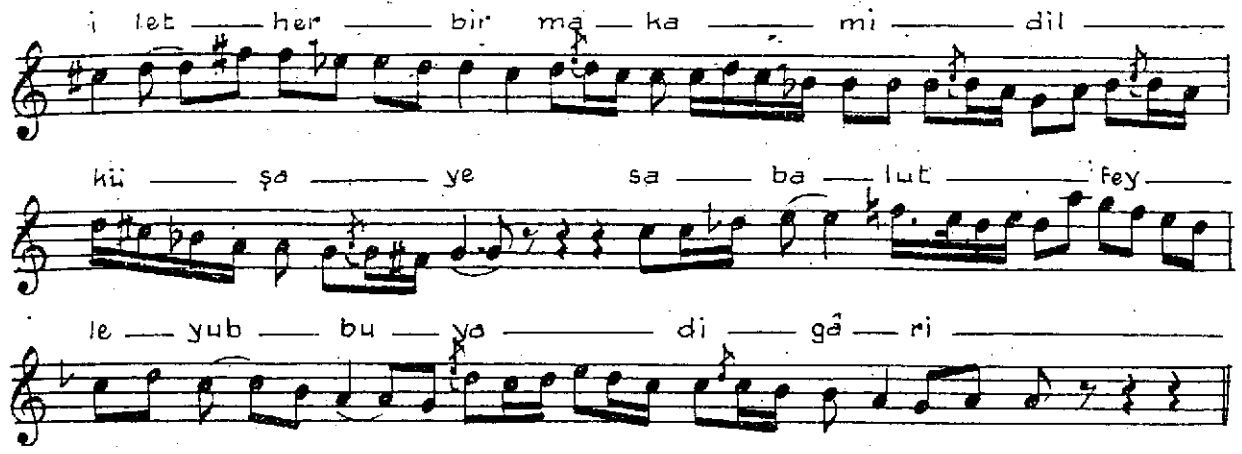
ni — gâ — re — ha — rab — ol — ma

ya — tâ — göy — lün — hi — sa — ri

i — düb — vas — Fi — se — gâ — he — o

dem — a — gaz — tû — keb — ev — ci

le — naz — mi — na — mi — da — ri



G Ü F T E S İ

Dağıtma eysaba geysuyi yari
Perişan eyleme ben dilfikâri

Dilem sad pare itme şane âsa
Dokunma kâkûli canane bari

Olalî çârigâhe ragıb ol şuh
Hüseyniye çıkardı iştihâri

O gülden ayrılıb gitdi Hicaze
Günüñ uzzal okur evsafi yari

Kelâmi rahatülervahadır heb
O şehnaz itsede itmem firari

Mühayyerdir işinde dilrubamız
Olur heb zarı zirüfkendi kâri

O zülfe sünbüle benzer dinilmez
Nevadır cane buyi müşkibari

Benim uşşak içinde şimdi meşhur
Beyati itmişim ahile zari

O gül bir buselik yer gösterirse
Aşiran zar ider göylüm hezari

Sürer rume acem ol bineziri
Çü gerdaniye vardır iştihari

Beni mecnun idüb bir kürdi dilber
Nihâvend semtine idi güzari

O mestî işve baze راستی geldim
Rehâvî eylemiş saze medari

Okur bir nakşi mutrib pençügâhden
Dili nekrize virme inkisari

Nefeslermi yeter mahure eydil
Bu şeb zavilde eyle nağmekâri

Ayagı tozi kühli isfehândir
Bilür âni nişaburün kibari

Arakla aldemiş dildari agyar
Mühalif reyile almış şikâri

Sakın olma sakın beste nigâre
Harab olmaya ta göylün hisari

İdüb vasfi segâhe o dem ağaz
Tüket evcile nazmi na midari

İlet her bir makami dilküşâyê
Saba lutfeyleyüb bu yadigâri