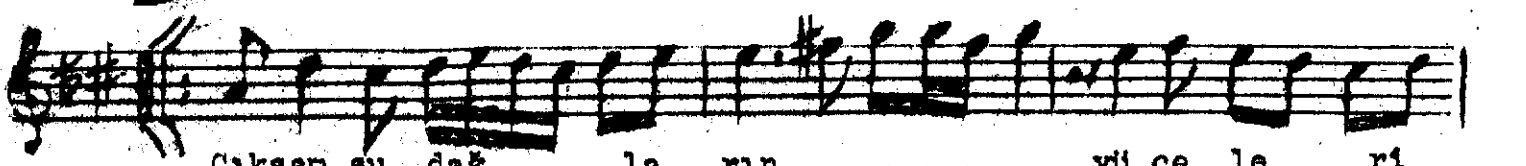
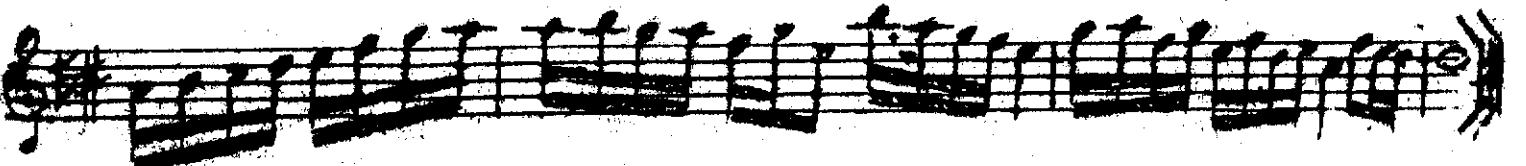
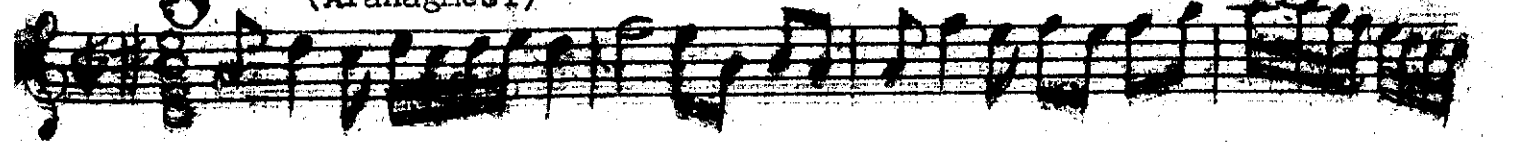


Düyek

(Aranânesi)

HİÇAB ŞARKI

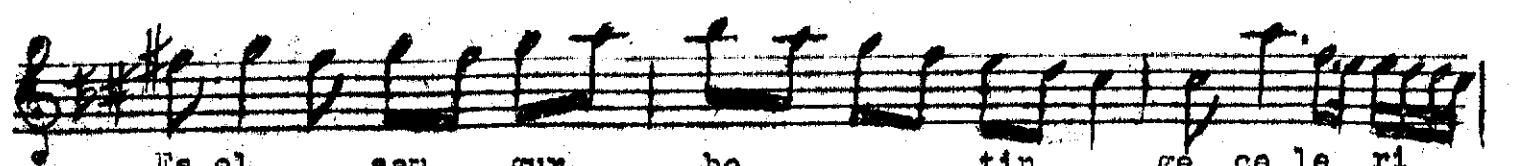
Beste: Arif Sani Tokar
Gürte: Süleymân Nazif



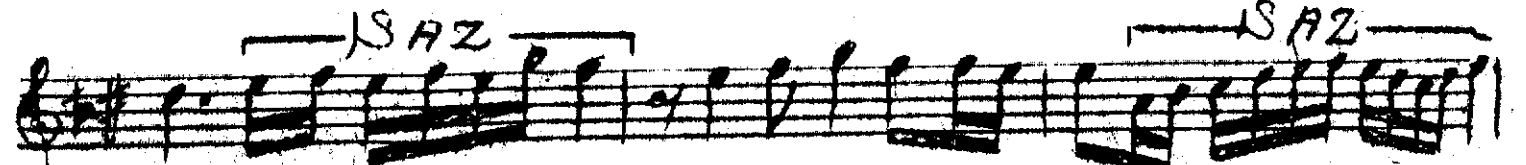
Çıksan şu dağ la rın..... yü ce le ri



ne ---SAZ--- ne ---SAZ---



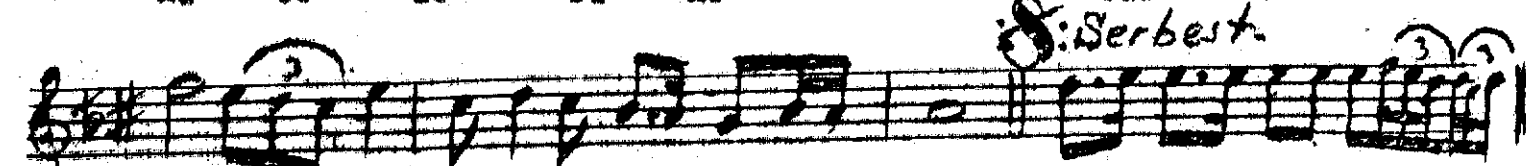
Eş ol san gur be tin ge ce le ri



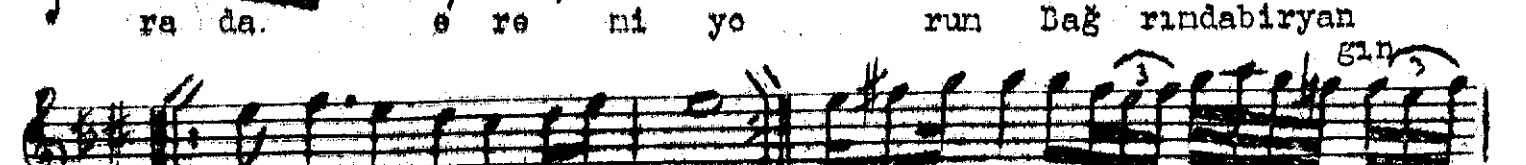
ne im re nip du ru run



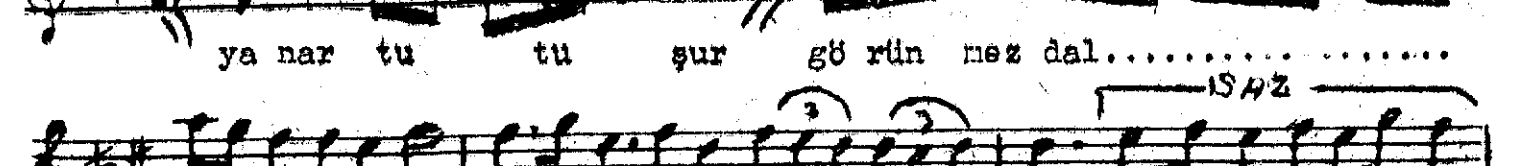
ni ce le ri ne bir ben ni hu



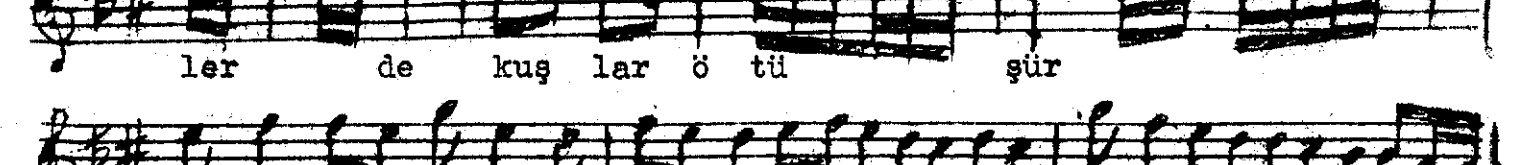
ra da e re ni yo run Dağ rın da bir yan



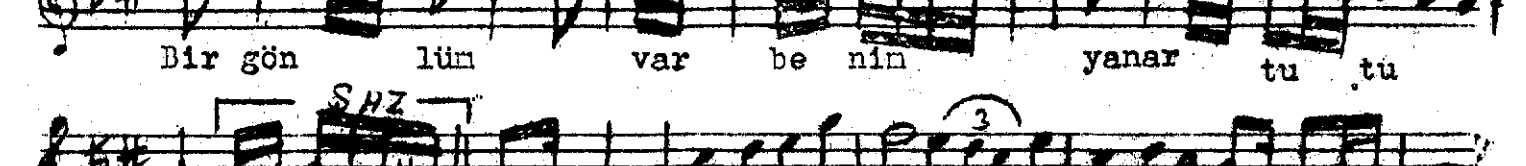
ya nar tu tu şur gö rün mez dal.....



ler de kuş lar ö tü şür



Bir gön lün var be nin yanar tu tu



şur bir ben ni hu ra da e re ni yo run

Çıksan şu dağların yücelerine
Eş olsan gurbetin gecelerine

İnrenir dururum nicelerine
Bir ben ni murâda ereniyorun.