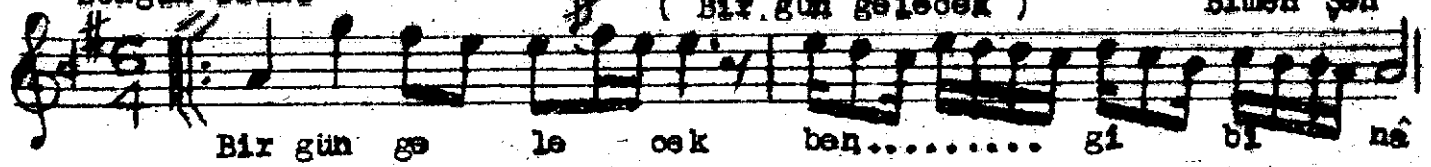


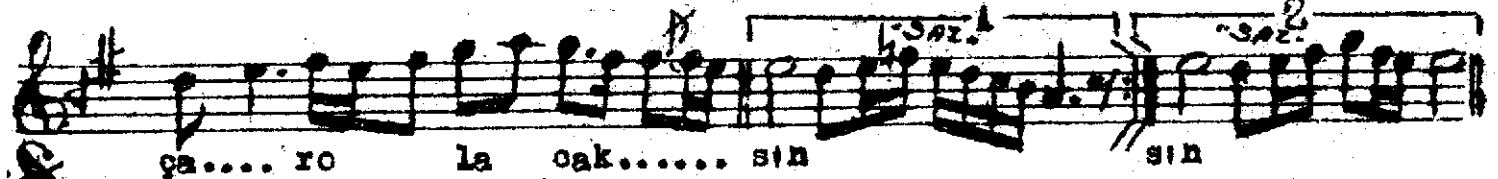
Sengin Semâî

MUSEVİNİ ŞARKI
(Bir gün gelecek)

Bimen Sön



Bir gün gelecek ben..... gibi binâ

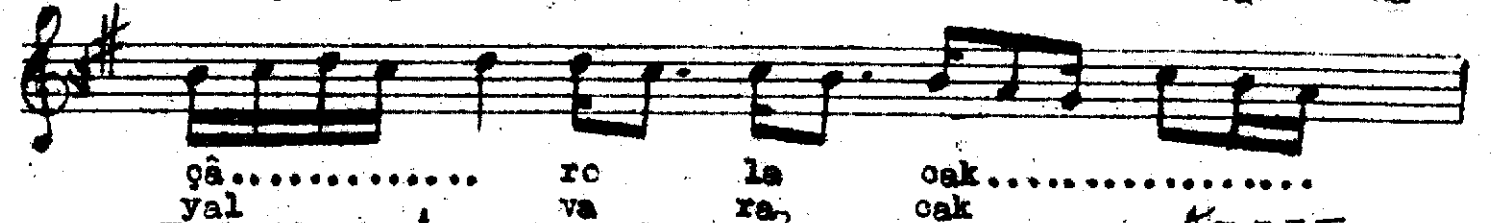


ça.... ro la oak..... sîn sîn

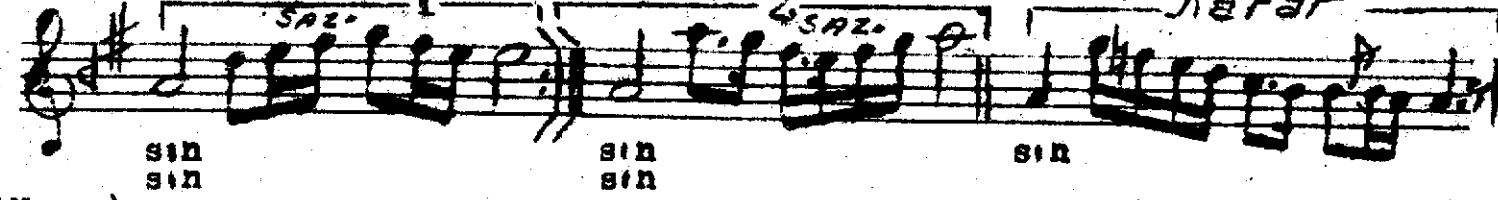
(Karat)



Ken dîn gi bi bir zâ..... li me dû na
Bir gün gelecek sen de ba na



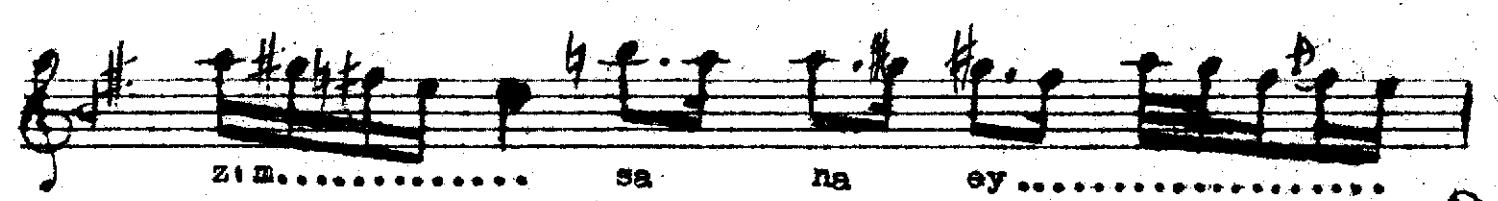
çâ..... ro la oak.....
val va ra oak



sîn sîn sîn sîn



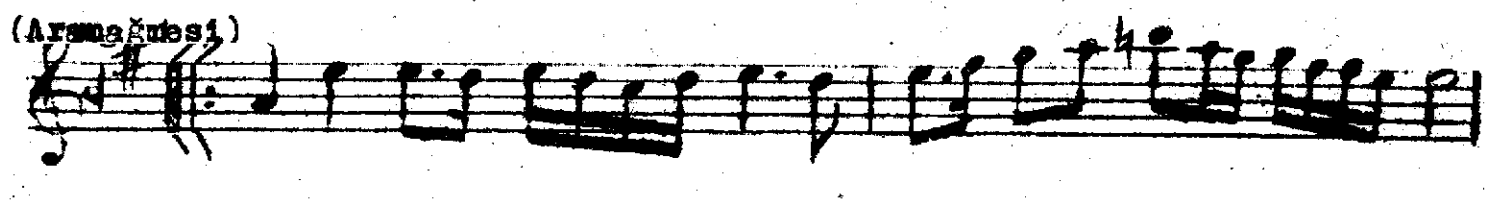
Geç me di bir gün..... nâ zü ni yâ



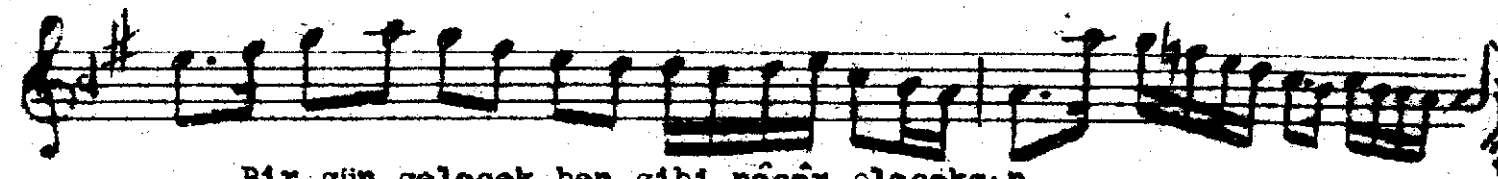
zî m..... sa na ey.....



mah mah



(Armağutsi)



Bir gün gelecek ben gibi nâçâr olacaksın
Kendin gibi bir zâlîme dâçâr olacaksın
Geçmedi bir gün nâz-ü niyâzım sana ey mâh
Bir gün gelecek sen de bana yalvaracaksın.