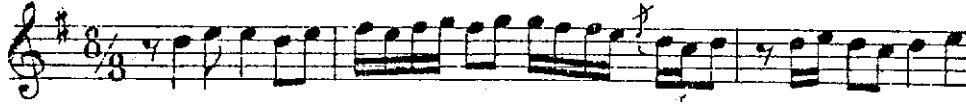


# HÜSEYİNİ İLÂHÎ

Güftesi himin eseri olduğu bilinmeyen bu ilâhînin bestesi Rifat Beyindir.

Düyek (♩ = 120) Ar şı ta \_\_\_\_\_ kı \_\_\_\_\_ me s ke nin



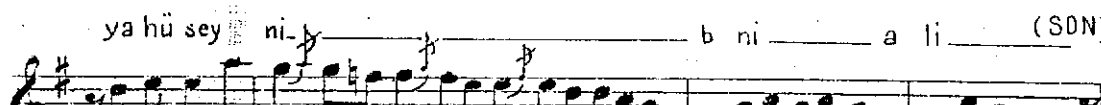
di \_\_\_\_\_ r ya hü sey ni \_\_\_\_\_ b ni \_\_\_\_\_ a li \_\_\_\_\_



fe r şı sa kı \_\_\_\_\_ me d feni \_\_\_\_\_ n di \_\_\_\_\_ r



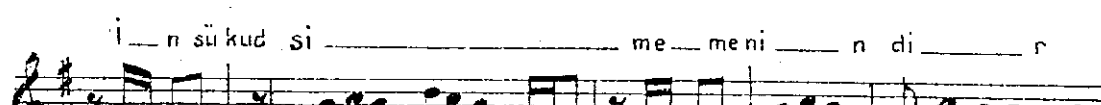
ma si va bi \_\_\_\_\_ r gü l şeni \_\_\_\_\_ n di \_\_\_\_\_ r



ya hü sey ni \_\_\_\_\_ b ni \_\_\_\_\_ a li \_\_\_\_\_ (SDN)



ya hü sey ni \_\_\_\_\_ b ni \_\_\_\_\_ a li \_\_\_\_\_



i \_\_\_\_\_ n sü kud si \_\_\_\_\_ me meni \_\_\_\_\_ n di \_\_\_\_\_ r



ya \_\_\_\_\_ hü sey ni \_\_\_\_\_ b ni \_\_\_\_\_ a li \_\_\_\_\_



## GÜFTESİ

Arş takı meskenindir ya Hüseyribni Ali  
Ferş sakı medfenindir ya Hüseyribni Ali  
İnsü kudsi memenindir ya Hüseyribni Ali  
Masiva bir gülşenindir ya Hüseyribni Ali